

A WORLD OF DIFFERENCE

Recognising and challenging stereotypes
of visible difference

CLASS DISCUSSION

What does the word **stereotype** mean?



A **stereotype** is an idea about a particular group of people that is often oversimplified, untrue or unfair.





CLASS DISCUSSION

What impact do **stereotypes** have?



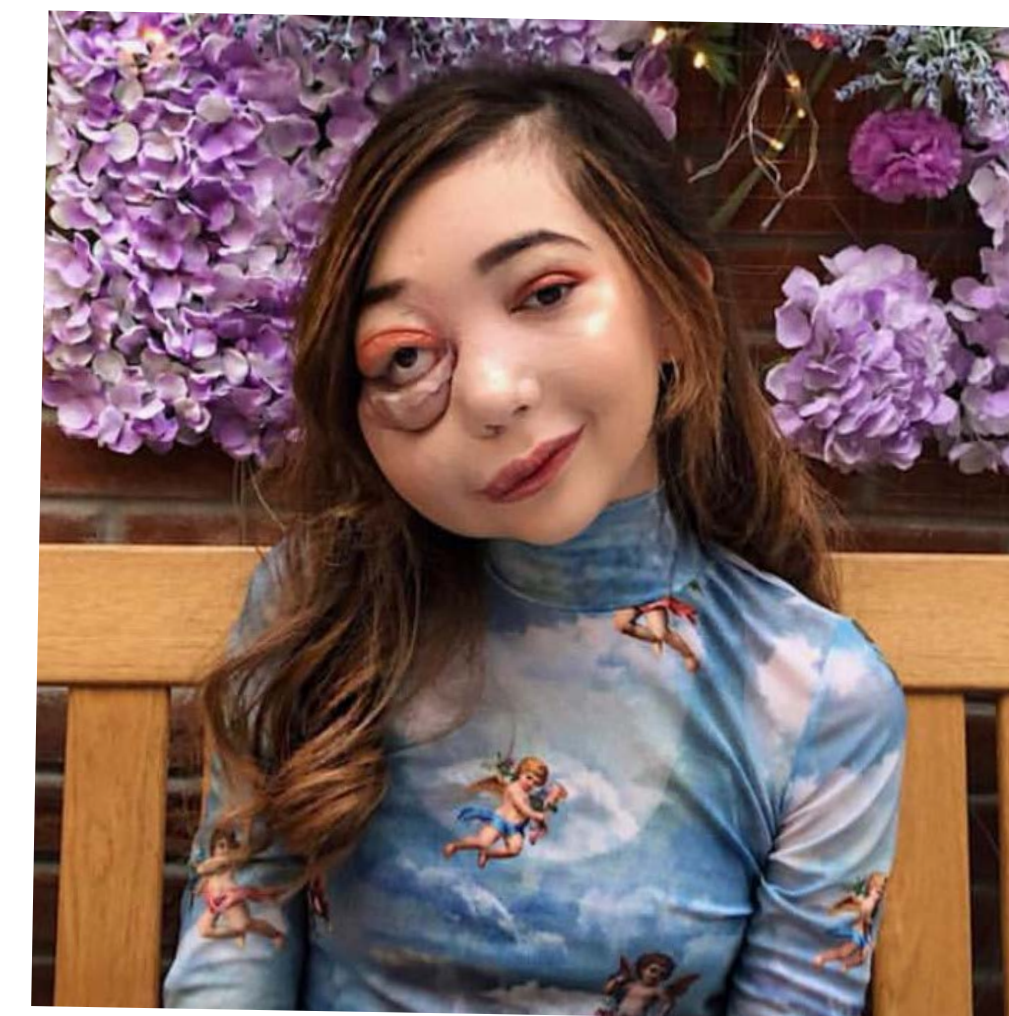
Today we're going to be talking about how **stereotypes** affect people who have a visible difference (a mark, scar or condition that affects how they look).



Causes of a visible difference:

- Skin conditions like eczema, acne, or vitiligo
- Burns
- Birthmarks
- Craniofacial conditions, affecting the growth and development of the skull and face
- Cleft lip/palate (a gap or split in the upper lip and/or roof of the mouth)
- Cancer

There are many types of **visible difference**



GROUP ACTIVITY

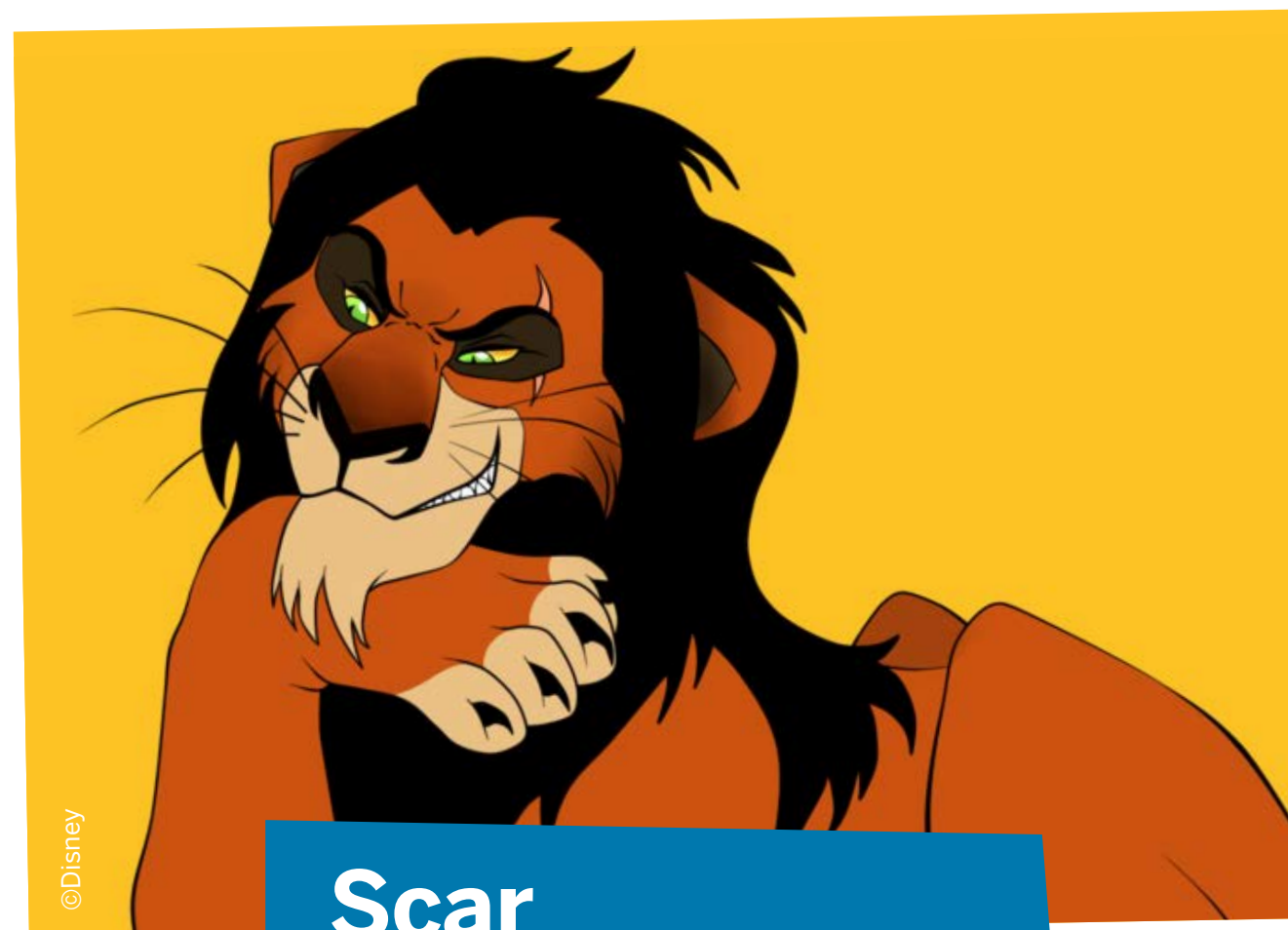
Write a list of film or TV characters who have a scar, mark or condition that affects their appearance.



Voldemort
HARRY POTTER



Dr Poison
WONDER WOMAN



Scar
THE LION KING



The Evil Queen
SNOW WHITE

CLASS DISCUSSION

What impact could stereotypical film
and TV villains have on people who have
a visible difference in real life?

#iamnotyourvillain



Find out more about visible differences
and respecting difference:
changingfaces.org.uk

Worried about anything we've discussed?
You can contact Childline for help:
childline.org.uk



Other helpful
websites:

youngminds.org.uk
respectme.org.uk