

# A WORLD OF DIFFERENCE

Recognising and challenging stereotypes  
of visible difference

# QUESTION TIME


What do these statements  
have in common?



All women are  
bad drivers



All teenagers  
take drugs and  
commit crime



Pensioners are  
too old to enjoy  
life anymore

Men are not very  
good at looking  
after children



They are all **stereotypes**.

A stereotype is an idea about a particular group of people that is often untrue or unfair.

# QUESTION TIME

What makes a film or TV villain scary?



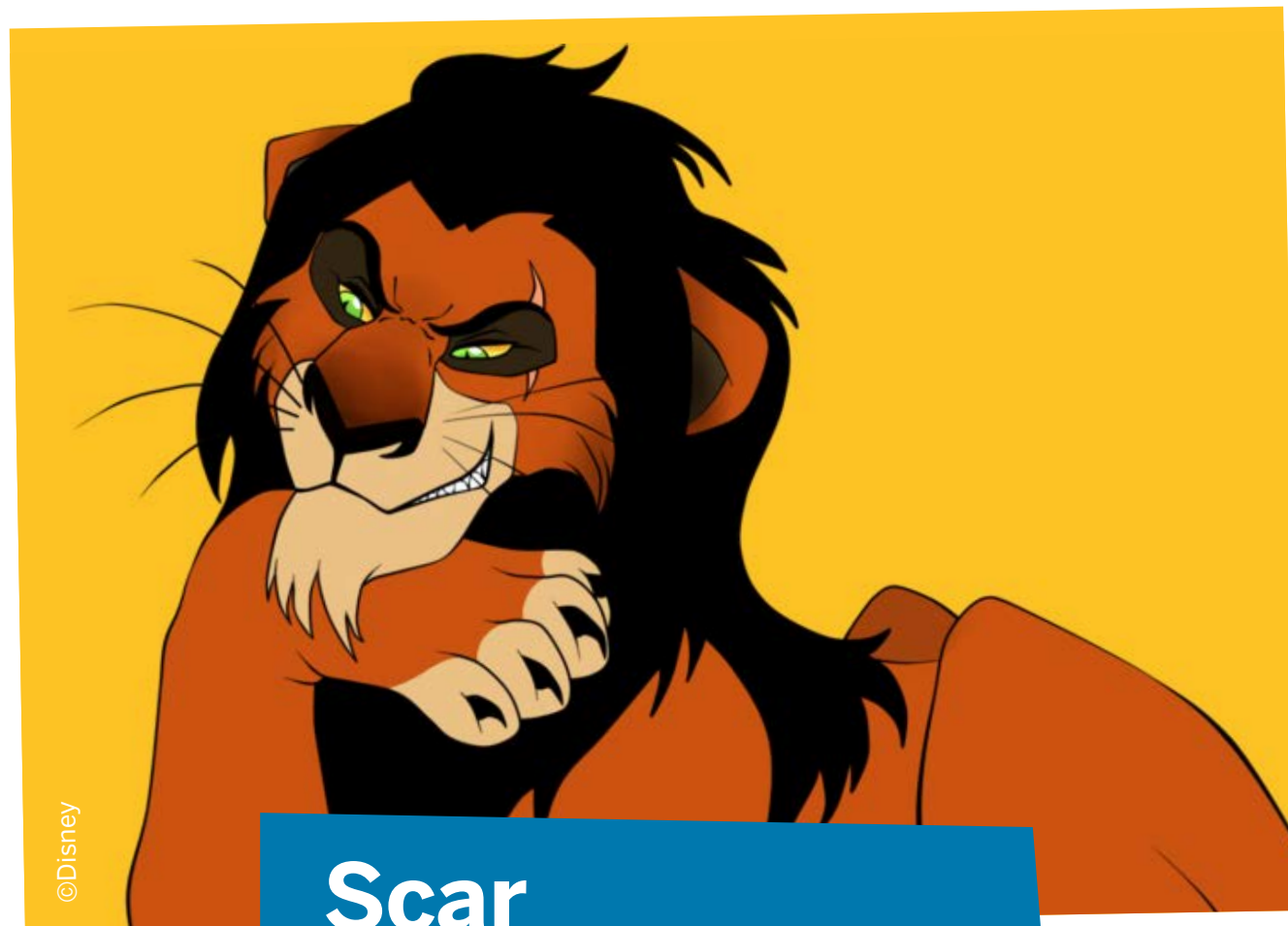
©Warner Bros. Entertainment Inc.

**Voldemort**  
HARRY POTTER



©Warner Bros. Entertainment Inc.  
and Ratpac-Dune Entertainment LLC

**Dr Poison**  
WONDER WOMAN



©Disney

**Scar**  
THE LION KING




©Disney

**The Evil Queen**  
SNOW WHITE



All of the villains on the previous slide have  
an **unusual appearance**, such as a scar.

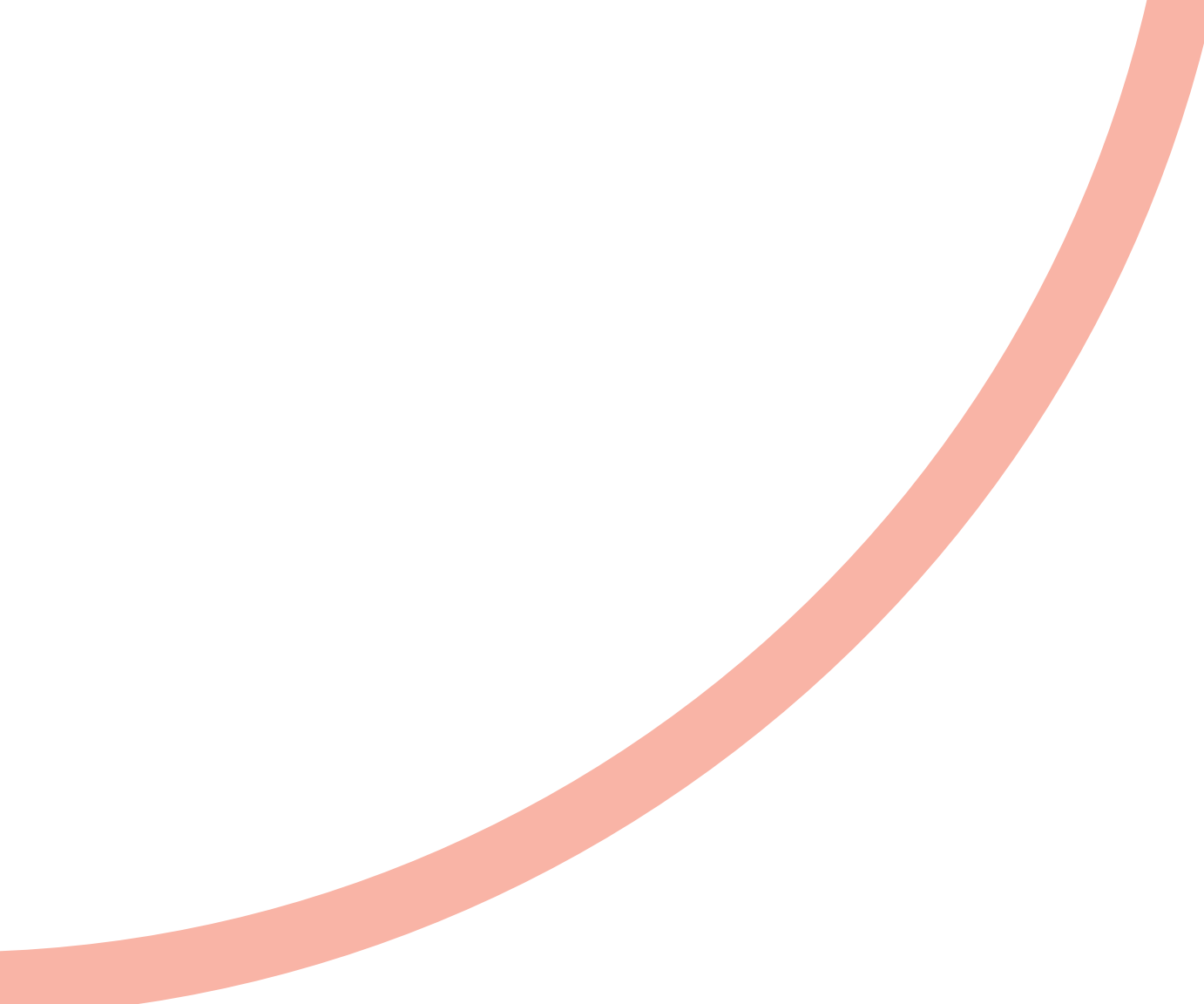
How many heroes can you think of who have a scar,  
mark or condition that affects their appearance?



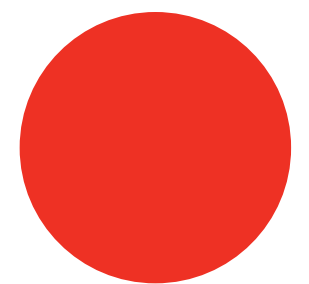
It's common for films and TV programmes to use the stereotype that if you look different, you must be a villain.

This has **a negative impact** on people who look different in real life.





A **visible difference** is a mark, scar or condition that affects the appearance of someone's face or body.

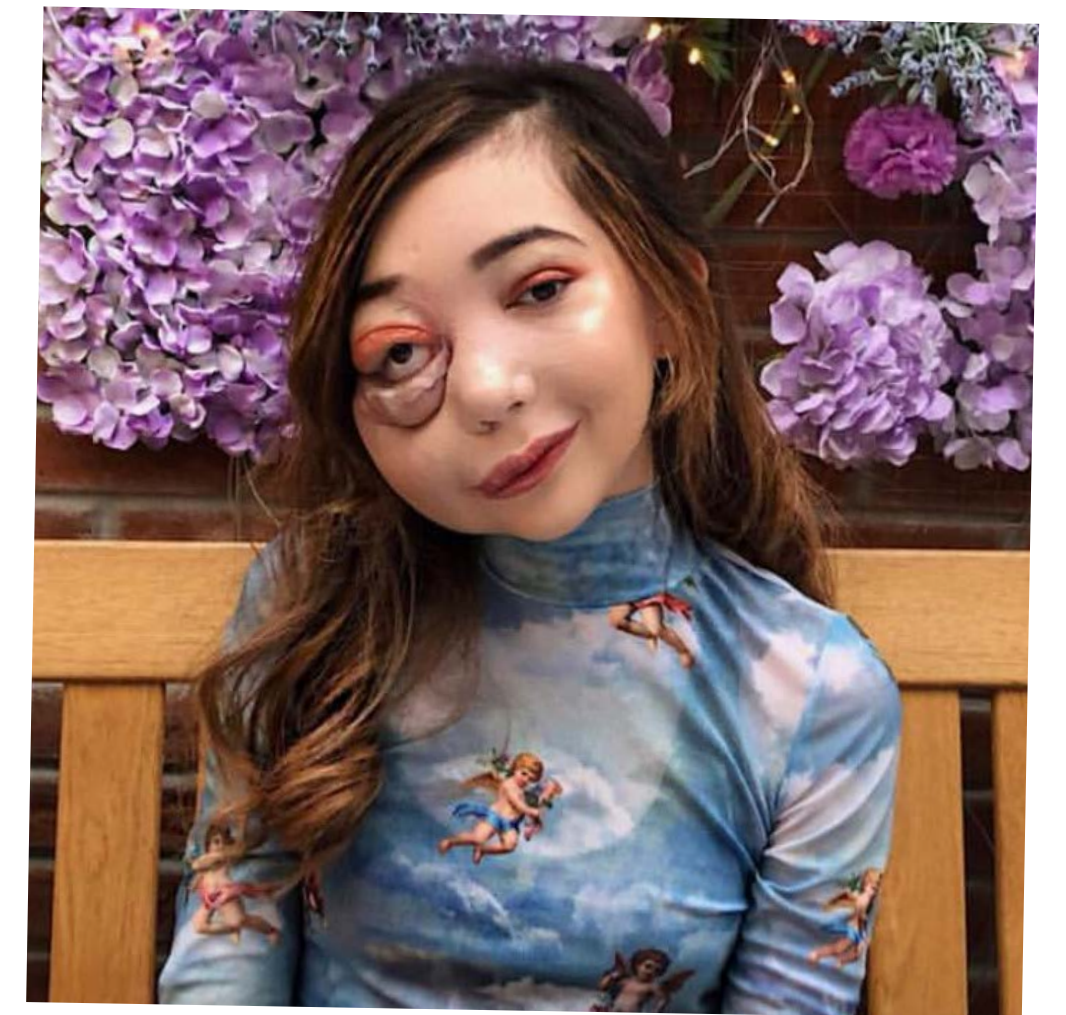




## Causes of a visible difference:

- Skin conditions like eczema, acne, or vitiligo
- Burns
- Birthmarks
- Craniofacial conditions, affecting the growth and development of the skull and face
- Cleft lip/palate (a gap or split in the upper lip and/or roof of the mouth)
- Cancer

# There are many types of **visible difference**



#iamnotyourvillain



Find out more about visible differences  
and respecting difference:  
**[changingfaces.org.uk](https://changingfaces.org.uk)**

Worried about anything we've discussed?  
You can contact Childline for help:  
**[childline.org.uk](https://childline.org.uk)**

