

A WORLD OF DIFFERENCE

Recognising and challenging stereotypes
of visible difference

CHARACTER QUIZ

Are these film characters
goodies or baddies?



©Disney

Belle

BEAUTY AND THE BEAST



©Disney

Belle

BEAUTY AND THE BEAST



©Disney

Scar
THE LION KING



Scar
THE LION KING



©Warner Bros. Entertainment Inc.

Voldemort
HARRY POTTER



©Warner Bros. Entertainment Inc.

Voldemort
HARRY POTTER



©Studio Canal

Paddington

PADDINGTON BEAR



Paddington
PADDINGTON BEAR



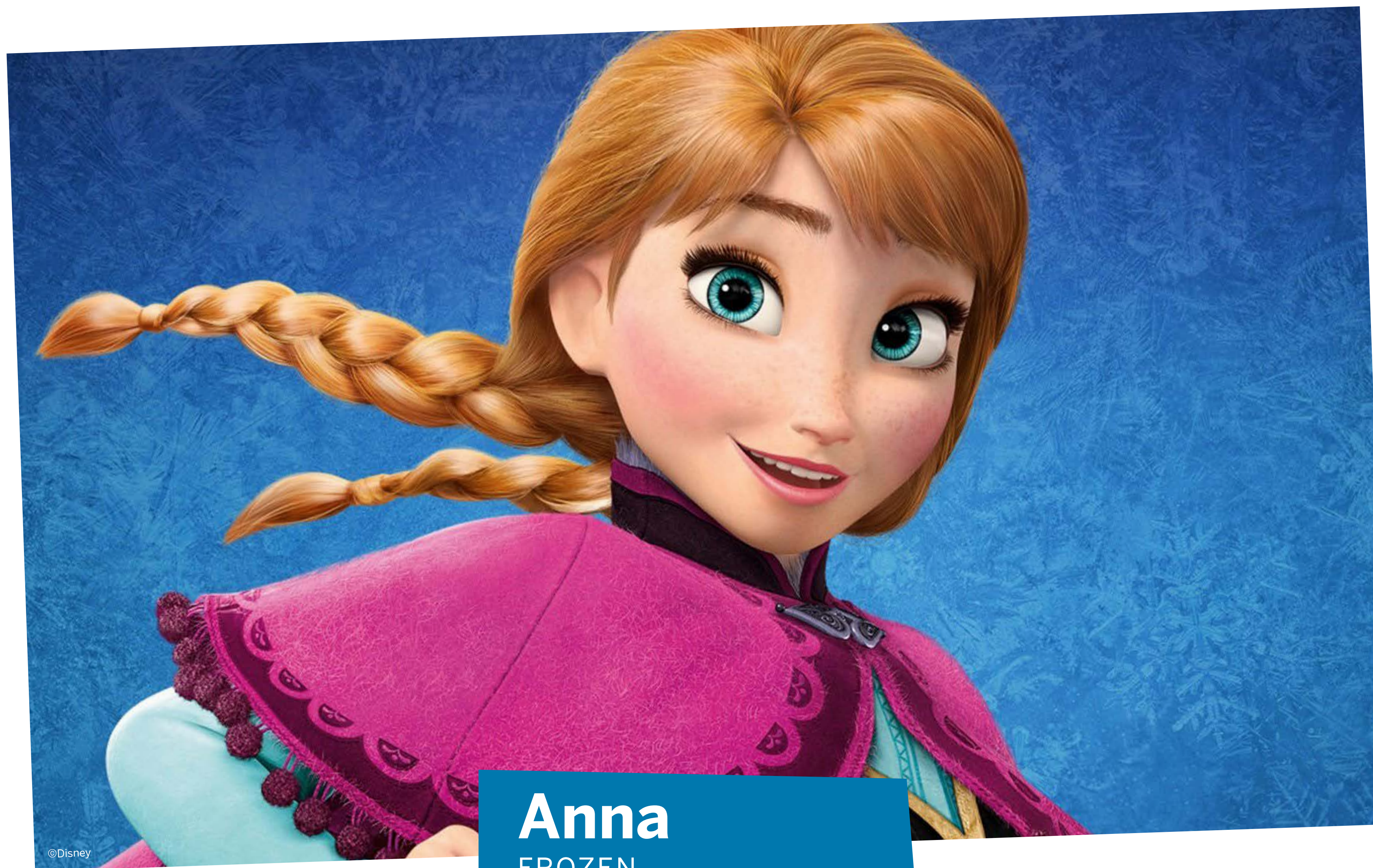
©Warner Bros. Entertainment Inc. and Ratpac-Dune Entertainment LLC

Dr Poison
WONDER WOMAN

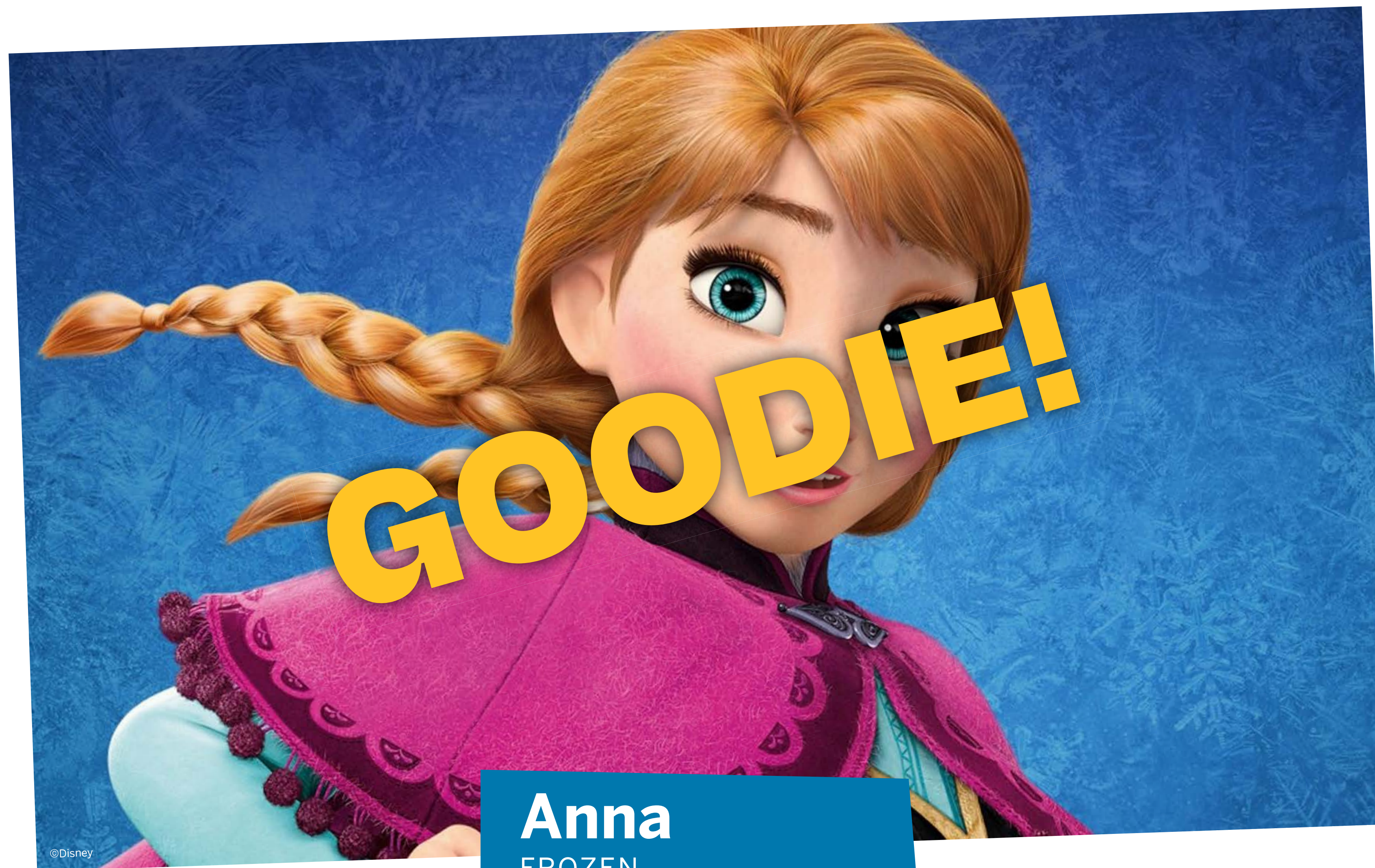


©Warner Bros. Entertainment Inc. and Ratpac-Dune Entertainment LLC

Dr Poison
WONDER WOMAN



Anna
FROZEN



Anna
FROZEN



©Disney

The Evil Queen

SNOW WHITE




GROUP DISCUSSION


What did you notice about
how the baddies looked?




A **stereotype** is an idea about a particular group of people that is often untrue or unfair.



Lots of films and TV programmes use the stereotype that if you look different, you must be a baddie. This is really **hurtful** to people who look different in real life.



A **visible difference** is a mark, scar
or condition that affects the appearance
of someone's face or body.

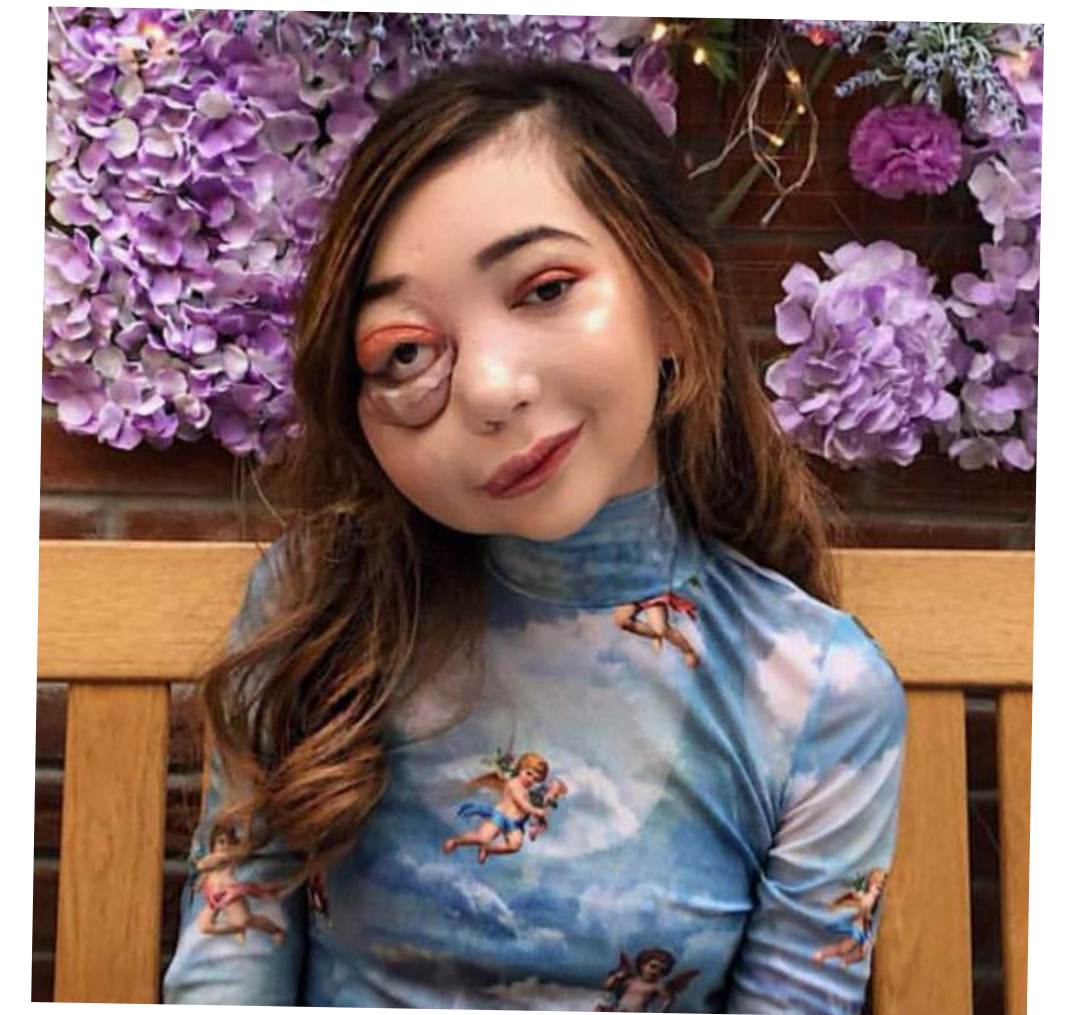




Causes of a visible difference:

- Skin conditions like eczema, acne, or vitiligo
- Burns
- Birthmarks
- Craniofacial conditions, affecting the growth and development of the skull and face
- Cleft lip/palate (a gap or split in the upper lip and/or roof of the mouth)
- Cancer

There are many types of **visible difference**



#iamnotyourvillain



Find out more about visible differences
and respecting difference:
changingfaces.org.uk

Worried about anything we've discussed?
You can contact Childline for help:
childline.org.uk



Other helpful
websites:

youngminds.org.uk
respectme.org.uk